

Winterhill School

Safeguarding Policy

Introduction

The Department of Education, Culture and Leisure Services is a member of the South Yorkshire Safeguarding Children's Board (SYSCB) and this policy accords with the SYSCB procedures. This policy follows the guidance presented in the DfES document "Working Together to Safeguard Children 2010".

Winterhill School recognises the responsibility placed upon its staff to deal with actual and suspected child abuse in a positive and effective way. Staff will endeavour to recognise and deal with concerns as quickly as possible and in accordance with the procedures outlined in this policy, which is intended to provide guidance and protection for children, parents and school staff.

Allegations of physical/sexual abuse made against school staff will be dealt with under agreed procedures (Circular 61A), which will be used in conjunction with the SYSCB procedures.

What is child abuse?

The working definition used in Rotherham is:

"Child abuse is intended or unintended act or omission (which is avoidable) which adversely affects a child's health, physical growth or psychological development whether or not the child or adult are aware of the abuse".

References in this policy to child, children, student or children and young people, are references to people who are under 18 years of age. (see Safeguarding Children in Education para.5).

Abuse may fall into a number of categories: - **physical injury, sexual abuse, emotional abuse and neglect.** Somebody may abuse or neglect a child by inflicting harm, by failing to act to prevent harm, or by failing to ensure safety and adequate care. Harm may occur intentionally or unintentionally. Children may be abused in a family or in an institutional or community setting; by those known to them or, more rarely, by a stranger.

Suspensions/concerns

All staff, whether voluntary or paid, acting in a position of responsibility with children, are required to discuss any suspicions or concerns with the Designated Teacher for child protection. Where there is suspicion or knowledge that a child is being abused there is a duty for the Designated Teacher to refer the concerns immediately to either Social Care or the Police who are the only two agencies with statutory duties and/or power to investigate and intervene. To ignore suspicion or concern may leave a child at risk.

Disclosure

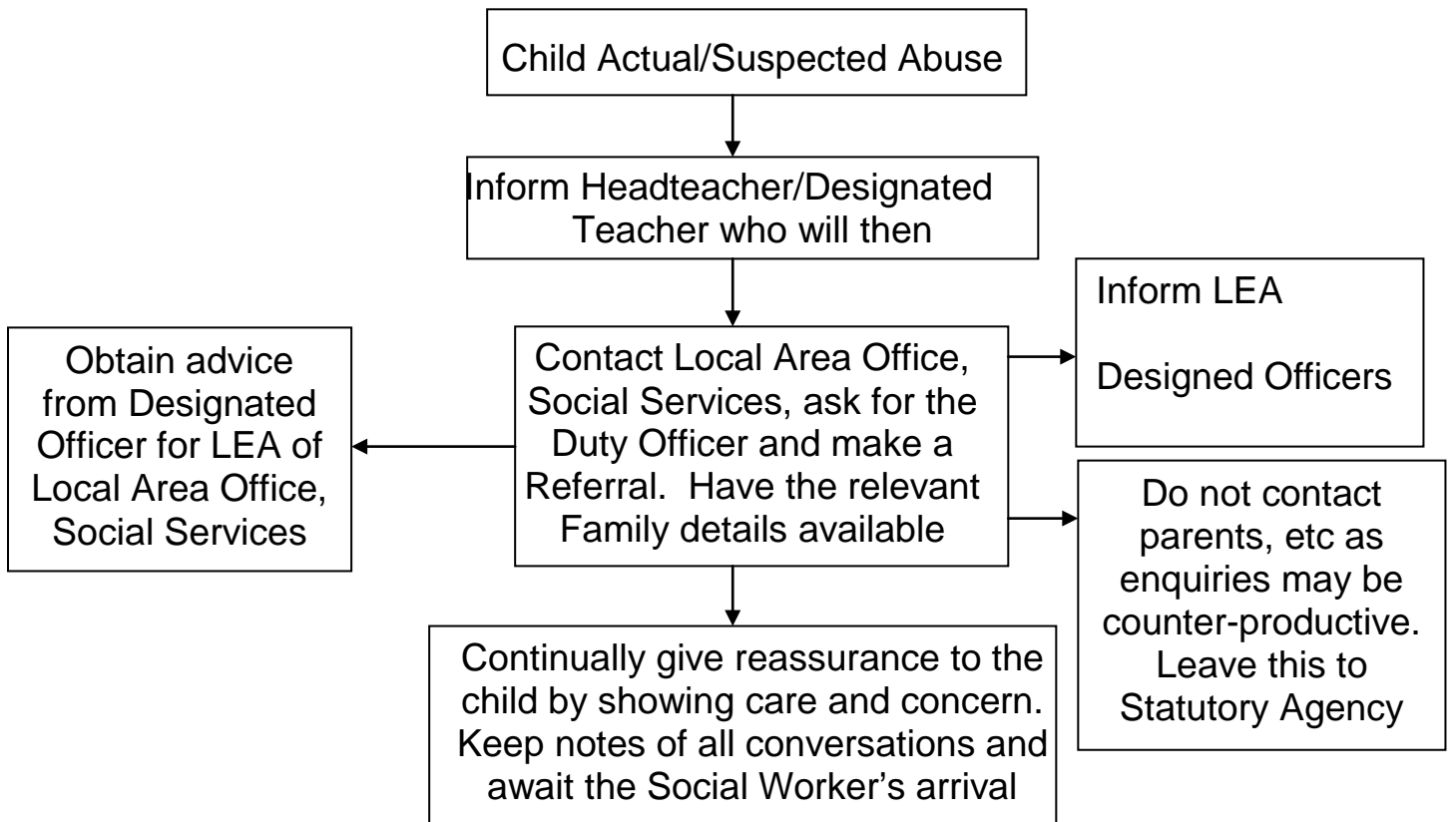
Disclosure may occur through class activity or directly to a member of staff. Students sometimes disclose to support staff and they will be made aware of child protection procedures and their duty to refer actual or suspected abuse. When children disclose abuse to members of staff, their account must be listened to and taken seriously. Staff are responsible for ensuring that any concerns/suspensions arising from disclosures are referred immediately to the Designated Teacher. The Child Protection teacher will follow SYSCB child protection procedures.

If a student discloses to you it is important that you:

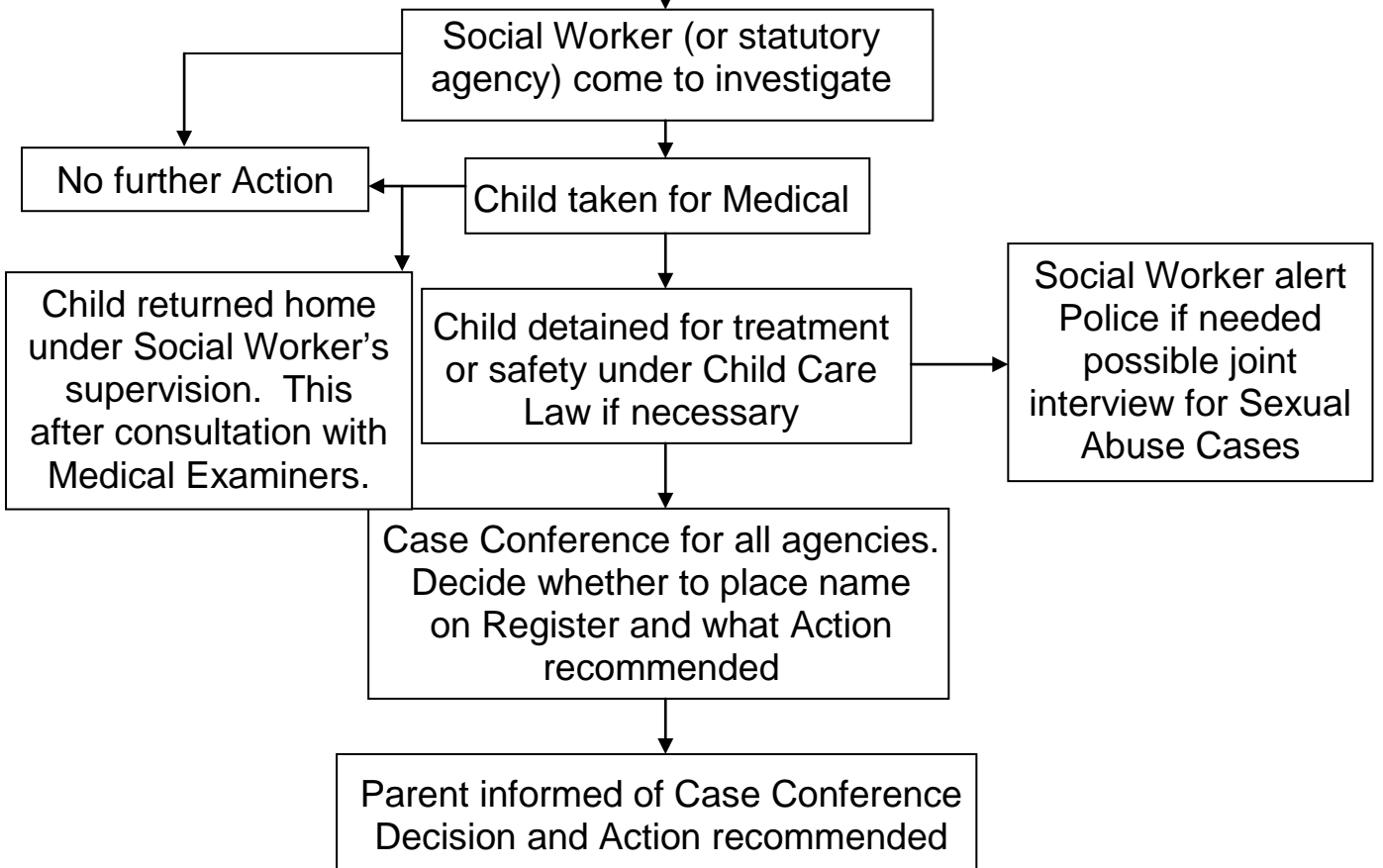
- Stay calm and reassuring
- Explain that you cannot keep what the child tells you a secret
- Must not press for details – it is better if the child does not have to repeat details unnecessarily
- Reassure the student that they have done the right thing to tell you
- Accounts should be as factual and objective as possible. Write down everything the student told you, verbatim if possible. If there are bruises etc if visible, do a sketch. Be specific about where, size, when etc but do not examine the students and do not ask leading questions. Do not take photos or electronically record the student's speech.
- Anything you record should be passed on immediately to Heather Walker, Lesley Sowerby or, failing that, the Headteacher. This should be done in person and as quickly as is possible.

Dealing with Child Abuse in Schools

Stage 1



Stage 2



More guidance is given in the DfES publication 'What to do if you are worried a child is being abused' (this is available at www.teachernet.gov.uk/childprotection/guidance.html)

Child Protection Records

Under any circumstances where a child leaves the school, any confidential child protection records eg case conference minutes relating to the child will be forwarded without delay to the new school.

Training

All lead staff will undergo training every 2 years.

All staff have training every 3 years delivered by the in-house team.

Temporary and/or supply staff will be given written information to ensure they understand their role and procedures to follow.

All staff new to the school are inducted into our policy and practice.

Allegations Against Staff

Any allegations will be dealt with in accordance with the DCFS.

All staff are informed in the safeguarding training of the importance of keeping themselves safe and of the appropriate way to act when dealing with students on any issue.

The role of the Designated Teacher – Child Protection

The Designated Teacher is responsible for advising staff and acting as liaison between other agencies when actual or suspected cases of abuse relate to students at the school. Information about children for whom there is child protection concerns will be shared on a 'need to know' basis.

The Designated Teacher for child protection in Winterhill School is Heather Walker, who is supported by Lesley Sowerby. In the absence of these members of staff, responsibility for child protection will pass to the Headteacher, Mr Burman.

Monitoring and Evaluation

A monthly meeting of the Safeguarding Team ensures ongoing monitoring. The Governor responsible for Safeguarding will attend at least one of these. A further annual report to Governors is presented to the Welfare Governors Sub Committee.

The role of the nominated Governor

This person will be responsible for liaising with the Headteacher, Designated Teacher and LEA regarding child protection issues.

The nominated Governor for Winterhill School is Carl Gager.

Parents

This policy is available on our website.

Further detailed information on Safeguarding Procedures in Rotherham Schools is contained in the South Yorkshire Safeguarding Children's Board website: southyorkscb.proceduresonline.com.

Attached to this document is Appendix 1. General Guidance to staff and on Rotherham Safeguarding Children's Board website.

Policy updated September 2011
In line with LEA Circular 61
H Walker