



A partnership of
Sheffield Hallam University
and the **University of Sheffield**

Our Offer for Schools

2023/24

Working With You

The Higher Education Progression Partnership (Hepp) works across South Yorkshire and North East Derbyshire to encourage more children, young people and adults to consider higher education opportunities

We are jointly funded by Sheffield Hallam University and the University of Sheffield.

In our region, the proportion of our school and college leavers progressing to higher education is lower than it should be. Too many are not fulfilling their potential. For many reasons, higher education doesn't feature in their future plans and aspirations.

That's where we come in. Our strategic aim is to work with you, supporting schools to address this.



Helping you achieve the Gatsby Benchmarks

Hepp's work, as detailed in this booklet, predominantly helps schools achieve Gatsby Benchmark 7 – encounters with further and higher education. We can provide you with a statement of activity each year as evidence for your Compass self-assessment.

Our resources will also support you in meeting elements of other Benchmarks, including:

- ▶ contributing to your stable careers programme (GBM 1)
- ▶ using careers and labour market information (GBM 2)
- ▶ addressing the needs of each pupil (GBM 3)
- ▶ linking curriculum learning to careers (GBM 4)

Meeting your needs

We know that each school has its own plans and challenges. Your Regional Activities Coordinator will work with you to make the most of the Hepp offer in your school. Arrange a meeting with them in school or virtually, or get in touch by phone or email to book in activities, ask questions and be signposted to relevant resources and events.

All our staff receive annual safeguarding training and we have designated safeguarding leads. We are committed to working with you to ensure the safety of young people.

For further details, please see our safeguarding statement in the About Us section of our website at www.hepp.ac.uk/about/safeguarding.



Working With Us

In order to ensure the safety and effectiveness of our engagements, and fulfil our responsibilities to contribute to regional and national conversations about widening participation, we ask the following of our partner schools:

Data Collection

In order to evaluate the long-term impact of the work of Hepp, we need to collect data on the learners and cohorts we are working with. Analysis of this data provides a robust impact assessment of the difference we are making to the lives of young people in our area. It also ensures we are working with those in greatest need.

Your Regional Activities Coordinator will be in touch with you on how to do this safely and securely at the appropriate time.

Supervision of learners

Our delivery team is highly trained and all have enhanced DBS clearance. However, they are not qualified teachers and, as such, should NOT be left alone to supervise learners. It is essential that a member of school staff is in the room for all Hepp engagements and that they provide an active presence including behaviour management. This also includes any engagements delivered online and via remote means. If a school is unable to guarantee this supervision, we will not be able to continue with an engagement.

Cancellations

We understand that there may be extenuating circumstances which lead to cancellation of an activity. However, with our finite resource in an area of great need, we ask for no less than two weeks' notice to cancel an event so that the date can be offered to other schools.

Underrepresented Groups

There are groups of learners who need our engagements more than most as they are statistically underrepresented in higher education. We would therefore ask that you ensure, wherever possible, that the following learners are included in each of your engagements:

- ▶ learners with a disability
- ▶ care experienced students
- ▶ estranged students
- ▶ students with caring responsibilities
- ▶ black students
- ▶ learners from area of low participation in higher education (your Regional Activities Coordinator can help you identify these areas)

The Hepp Offer

Your Regional Activities Coordinator will work with you to discuss and plan how to get the most out of the Hepp offer.

In 2022/23 Hepp delivered

508 presentations and workshops

– engaging with **25,525** learners

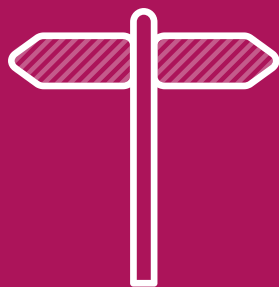
There are four elements to the Hepp offer to schools:



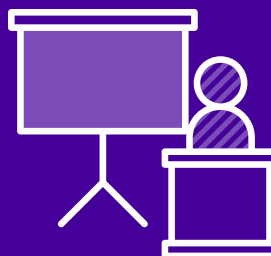
Free, high quality resources for teachers and advisers to enable school-led delivery - accessed via our HeppHUB



Activities delivered by the Hepp team to learners in schools (physically and virtually) or on campus



Signposting to our wider partnership provision, including activity provided by our university partners - Sheffield Hallam University and the University of Sheffield - accessed via the 'Hepp Connects' section of HeppHUB

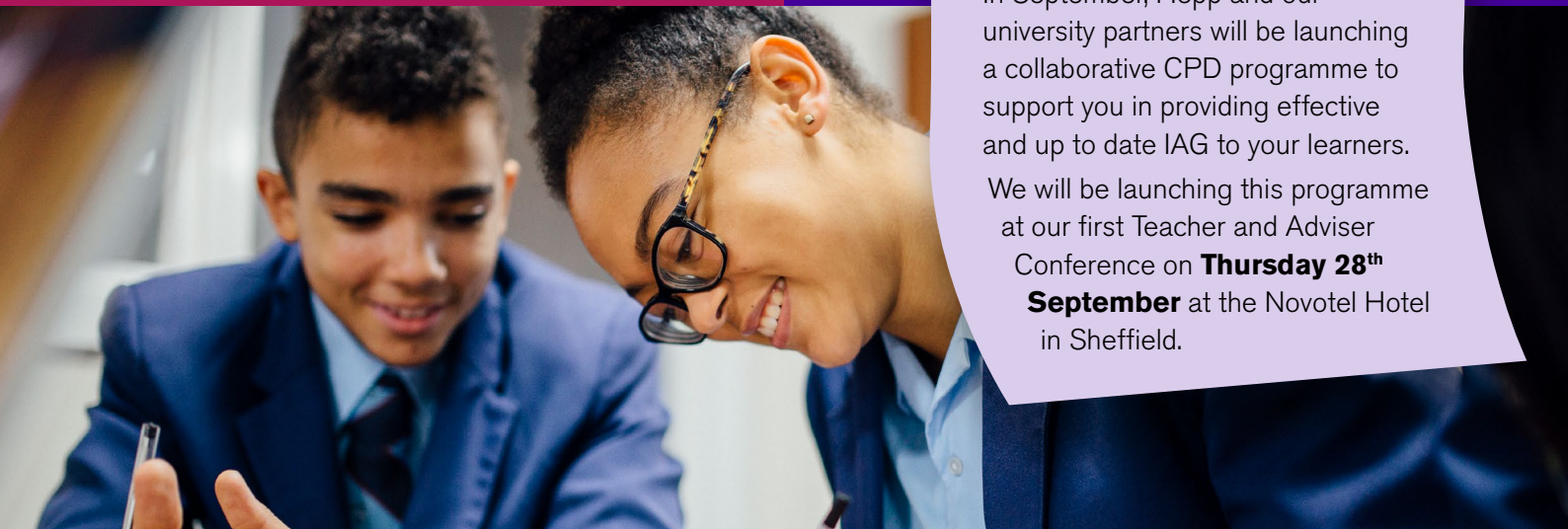


CPD provision for teachers, advisers and other key influencers, facilitated through Hepp and partner delivery and online resources

Save the date!

In September, Hepp and our university partners will be launching a collaborative CPD programme to support you in providing effective and up to date IAG to your learners.

We will be launching this programme at our first Teacher and Adviser Conference on **Thursday 28th September** at the Novotel Hotel in Sheffield.



How many activities can schools have?

As part of our new universal offer for 23/24, we can offer all of our region's schools a minimum of two engagements per year. In addition to this universal provision, we will work with those schools with the greatest need to deliver a targeted, multiple intervention programme of activity.

We use deprivation data to rank schools based on need. These data sets ensure we are prioritising those schools with the largest number/proportion of learners from backgrounds where they are less likely to progress to higher education. Your Regional Activities Coordinator will confirm if your school is eligible to be involved in this programme.

<h3>Universal Offer</h3> <p>All our region's schools are entitled to two face to face engagements per year, plus unlimited access to online resources and events:</p>	<h3>Multiple Intervention Offer</h3> <p>In addition to our universal offer, we will work with up to 20 schools to deliver a multiple intervention programme across Year 8, 9 and 10:</p>	<h3>Go Further Go Higher</h3> <p>In addition to Hepp's universal and targeted/sustained provision, Hepp also deliver multiple intervention activity aimed at learners who face additional barriers to HE progression</p>
<ul style="list-style-type: none"> Two face to face engagements per year Unlimited access to our HeppHUB resources Unlimited access to our pre-recorded sessions on request Unlimited attendance at our online festival HeppFEST. 	<p>Involving schools prioritised using a five year average of FSM data to ensure we are working with those with greatest need</p> <p>Learners will participate in three interventions per year group per year</p> <p>Activity will take place both in school and on campus</p>	<p>Bespoke programme of activity targeted at groups of learners who are traditionally underrepresented in higher education and face additional barriers</p> <ul style="list-style-type: none"> ▶ care experienced students ▶ young carers ▶ students with disabilities ▶ black students <p>Identified students will be invited to attend and a full programme of activity is available for their parents, carers and influencers</p> <p>We we also have a programme of events for people working with mature students.</p>

Some of our partner schools may be entitled to additional support from our sister organisation Hepp South Yorkshire through the UniConnect programme. To keep in touch about HeppSY programmes and projects, visit www.heppsy.org

What format can engagements take?

There are several ways in which we can deliver face-to-face activity. Your Regional Activities Coordinator will work with you to develop a programme for your school and to help you book in sessions.

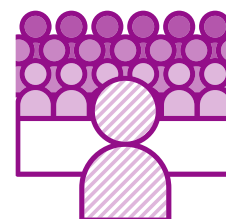
Interactive workshops

- ▶ facilitated by Hepp staff to no more than 35 learners in one classroom
- ▶ delivered face-to-face
- ▶ seminar style
- ▶ embedding skills development alongside providing learners with key information on the chosen strand
- ▶ 45-60 minutes

Assembly-style presentations

- ▶ more traditional lecture/presentation-based input
- ▶ providing information and developing knowledge
- ▶ up to a whole year group in a suitable venue
- ▶ 20 minutes
- ▶ can be extended with an optional Q&A with our delivery team and Student Ambassadors

Our workshops and assemblies can be delivered in school or as part of university campus visits. Assemblies can also be delivered virtually. Schools can also access pre recorded versions of our assembly style presentations from our website to use at a time which suits them.



Activity Strand Objectives

Our activities for schools are framed around tackling the key barriers young people face in relation to higher education progression and decision making. Our sessions aim to develop knowledge and confidence, to challenge misconceptions and stereotypes, and to aid decision making.

Our activity based workshops also have skills development embedded within them - focusing on transferrable skills derived from the SkillsBuilder framework: Aiming High, Problem Solving, Speaking and Listening. The knowledge and skills gained by strand are set out below, with individual session learning outcomes on the following page.



I can ACHIEVE...	I BELONG in Higher Education...	I UNDERSTAND what Higher Education is...	I can make informed DECISIONS...
<p>To help students develop their academic confidence, mindset and their resilience to setbacks. This strand will support students to explore their inspiration and motivation to achieve.</p>	<p>To challenge stereotypes, address misconceptions and show students the power of role models and influencers. This strand will help students know they belong in Higher Education.</p>	<p>To help students understand the costs and benefits of higher education, to enable them to make an informed choice. Students will understand how to fund their Higher Education journey, the support they can access and what studying at Higher Education looks like. This strand shows students where Higher Education can really take them.</p>	<p>To help students know their Higher Education options, plan their routes and make informed choices about the next steps. This strand supports students making challenging decisions and planning their future.</p>

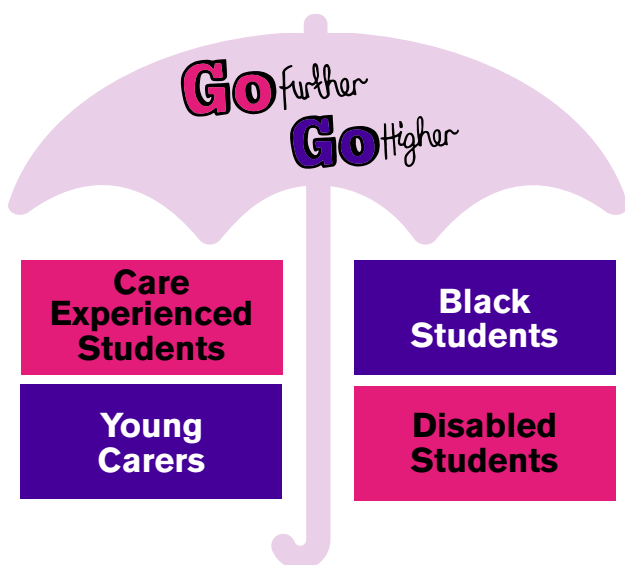
“ At first I didn't know that Higher Education exists, and I think it has opened a door in my future”
Learner



“ I have learnt that if you want something, no matter how hard it is, if you put your mind to it, you can do it”
Learner

Go Further Go Higher

Our Go Further Go Higher programmes are targeted at specific groups of students who are underrepresented in Higher Education and who face additional barriers when considering and accessing Higher Education.



For academic year 23/24, we have developed sustained programmes for:

- ▶ Care Experienced students
- ▶ Young Carers
- ▶ Disabled students
- ▶ Black students

(We are currently in the process of developing our programme for Black Students which we hope to launch in Spring/ Summer term 2024)

Each programme is tailored to the particular needs and barriers of the group and consists of:

- ▶ A launch event
- ▶ 3 activities each year from year 8 through to year 10.
- ▶ A celebration event in Year 11.

All activities will take place at a higher education institution.



Programme content and learning outcomes have been developed using our PIE model:

P = **Power** – empowering students with soft and transferrable skills, and the confidence that higher education is an option for them.

I = **Investigation** – equipping students with the knowledge and skills to investigate and understand their options through subject taster sessions.

E = **Explore** – helping students explore what higher education institutions offer (facilities, social, extracurricular elements, and support).

For more information, visit our website or contact Kelly Self, Go Further Go Higher Project Coordinator.

Mature Students



Hepp has provision to support mature students into higher education through [resources found on the HeppHUB](#) and through community activity.

Session Learning Outcomes

The table below shows the specific learning outcomes each session has been developed to meet. These year groups are suggested. You can choose a different year group session if you feel the content is relevant – just speak to your Regional Activities Coordinator.

	I can ACHIEVE ...	I BELONG in Higher Education...
Y11	Understand the importance and benefits of having a positive mindset and develop strategies for goal setting.	Challenge misconceptions about who can access HE (<i>"people like me won't get in"</i>). Interact with relatable role models who have already been to university or who are currently at university.
Y10	Understand what academic confidence is and why it is important. Develop strategies to improve academic confidence.	
Y9	Understand the importance of motivation to achieve and why it's important to achieve. Develop strategies to improve motivation.	Understand what the misconceptions are relating to HE (<i>"people like me don't go, won't get in, won't fit in, won't succeed"</i>). Challenge misconceptions about who attends HE (<i>"people like me don't go"</i>). Interact with relatable role models who have already been to university or who are currently at university.
Y8	Understand the importance/value of achieving at school.	Understand what university/higher education is and challenge perceptions about who goes to HE.
Y7	Develop Time Management and Goal Setting strategies.	Interact with relatable role models who have already been to university or who are currently at university and understand who may have an impact on your choices.



“ Anyone can enter university, no matter what background you are from”
Learner

I UNDERSTAND what Higher Education is...

I can make informed DECISIONS...

Understand the academic benefits of higher education (teaching/learning/research/facilities/concept of choice: what/where/how).

Understand student funding entitlement and the link between student loan repayments and graduate earnings.

Be able to weigh up the costs and benefits of higher education and make an informed choice.

Understand what careers require HE and how HE will help your career.

Understand your post-16 options (what, where and how you can study) and where these qualifications fit in relation to higher education progression.

Reflect on your own educational/career aspirations.

Understand how these can inform post-16 and higher education decision making.

Y11

Understand the experiential benefits of higher education (independence/transferable skills/social element).

Understand the cost of higher education and how student finance can cover these costs.

Understand how student loans are repaid.

Understand how to make a decision and be able to apply this skill to upcoming key stage 4/post-16 choices.

Begin to reflect on your own educational/career aspirations, how these can inform post-16 route planning and introduce how post-16 choices will impact this.

Y10

Understand the Financial, Academic, Career and Experiential benefits of going to higher education.

Understand how much higher education costs and how student funding covers these costs - an introduction to student finance.

Understand how to make a good decision and the impact good decisions can have.

Understand how this can apply to future educational choices as well as KS4 options and beyond.

Y9

An introduction to Higher Education and the different reasons why people choose to go.

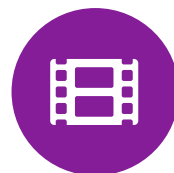
Understand the key differences between school and university/higher education (including that, unlike school, HE is not free).

Understand how to make a good decision and the impact good decisions can have.

Understand how this can apply to future educational choices as well as KS4 options and beyond.

Y8

Y7



heppHUB

Here to provide practical online **support** to teachers and advisers, as well as **signposting** to higher education related outreach activity in South Yorkshire and North East Derbyshire working **strategically** with partners across the region.



Register today and encourage other colleagues to join too - there's **no limit** to how many members of staff can access our resources!

www.hepp.ac.uk

Supporting

HeppHUB provides free online resources for use in the classroom, for your parents and carers, and for the professional development of your own staff.

Topic Please select a topic	Type Please select a type
Year Group Please select	Search Please enter a keyword

Classroom resources

On HeppHUB, you will find a variety of pre-recorded presentations, videos and information booklets. The resources can be used with years 5-13 and cover the benefits of higher education, student finance, choices and pathways, and student life. They are all easily searchable using the filter system, where you can select by year group, topic and type. You can use these resources in many different ways to build a programme of study for PSHE lessons, to plan assemblies or presentations for options evenings, or as part of your own offer for drop-down days.

Parent and carer resources

We understand how important family members are when young people make decisions about higher education. Therefore, we also have a dedicated section for parents and carers, where they can find information booklets and videos to use as conversation starters or to help them support their child.

CPD resources

We have created a section of CPD resources to develop your own knowledge of higher education and the Gatsby Benchmarks, and how to share these with relevant colleagues and other audiences.



Signposting

Partner provision

HeppHUB features information about the resources and outreach activities of our funding partners, Sheffield Hallam University and the University of Sheffield, as well as our wider partners.

Hepp Connects

The Hepp Connects page advertises higher education related outreach activity across our region and beyond. These range from open days, taster activities or bespoke visits on campus or in school.



Strategically

HeppHUB is built on our strategic approach, working with partners across our region to provide a single point of contact for impartial Information, Advice and Guidance (IAG).



University campus visits

Having a campus visit as one of your engagements is a great way to give your students an experience of university.

These are available at either Sheffield Hallam University or the University of Sheffield. You can choose the cohort of students using any criteria. Perhaps you would like to remove the unknown for those who have never visited, to raise aspirations, to encourage high-achieving students or invite students as a general incentive/reward.

We will plan the day's itinerary to suit your requirements but it usually includes:

- ▶ a welcome talk
- ▶ a workshop
- ▶ a campus tour
- ▶ an interactive Q&A session with our student ambassadors, who share their current and relevant insights



The kids have got a lot out of it

and enjoyed seeing the uni. It has really inspired some of them. A couple would like to start tomorrow please.”

Teacher



The students on the campus tour had a great time and were talking about it all the way back on the bus.”

Teacher

Who we are

Regional Coordinators:



Katie Fairhurst

Regional Coordinator
(Rotherham and Doncaster)

☎ 0114 225 3630

☎ 07464 510 408

✉ k.j.fairhurst@shu.ac.uk



Joe Abram

Regional Coordinator
(Sheffield)

☎ 0114 225 2728

☎ 07425 613 530

✉ j.abram@shu.ac.uk



Carrie Chattoo-Zindani

Regional Coordinator
(NE Derbyshire and Barnsley)

☎ 0114 225 3628

☎ 07833 200 344

✉ C.Chattoo-Zindani@shu.ac.uk



Rachael Frost

Regional Coordinator
(NE Derbyshire and Barnsley)

☎ 0114 225 3736

☎ 07833 200 249

✉ R.Frost@shu.ac.uk



The session has given exposure, inspiration and motivation to the tasks ahead of them”

Teacher



Students were able to see that barriers to higher education were easy to overcome and that HE is accessible to a much wider range of students than they previously thought.”

Teacher

Other members of the team:



Gemma Styles

Hepp Director

☎ 0114 225 4182

✉ G.Styles@shu.ac.uk



Alex Bairstow

Operations Manager

☎ 0114 225 2786

☎ 07880 089 212

✉ Alexander.Bairstow@shu.ac.uk



Kelly Self

Project Coordinator

☎ 0114 225 2935

☎ 07824 431 415

✉ K.Self@shu.ac.uk



Tom Broom

Data & Evaluation Coordinator

☎ 0114 225 3476

☎ 07796 091 436

✉ t.broom@shu.ac.uk



Emily Wood

Business Administrator

☎ 0114 225 3045

✉ emily.wood@shu.ac.uk

The Higher Education Progression Partnership (Hepp) works across South Yorkshire and North East Derbyshire. Our mission is to ensure that every young person knows that higher education exists and could be an option for them.



@Hepp_YES



0114 225 3045



hepp@shu.ac.uk



www.hepp.ac.uk

Supported by:

**Sheffield
Hallam
University**

 **University of
Sheffield**

In collaboration with:

 **OfS Uni Connect
Programme**